

Rioned.

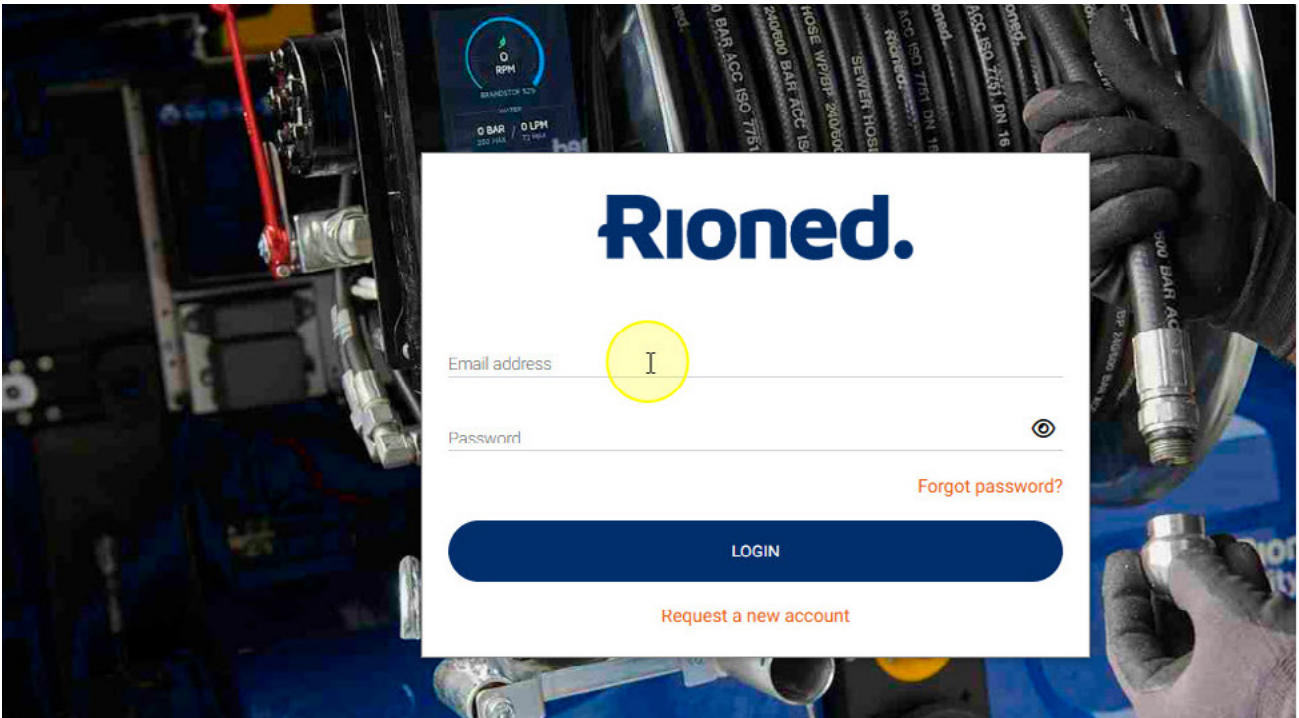


RioConnect.

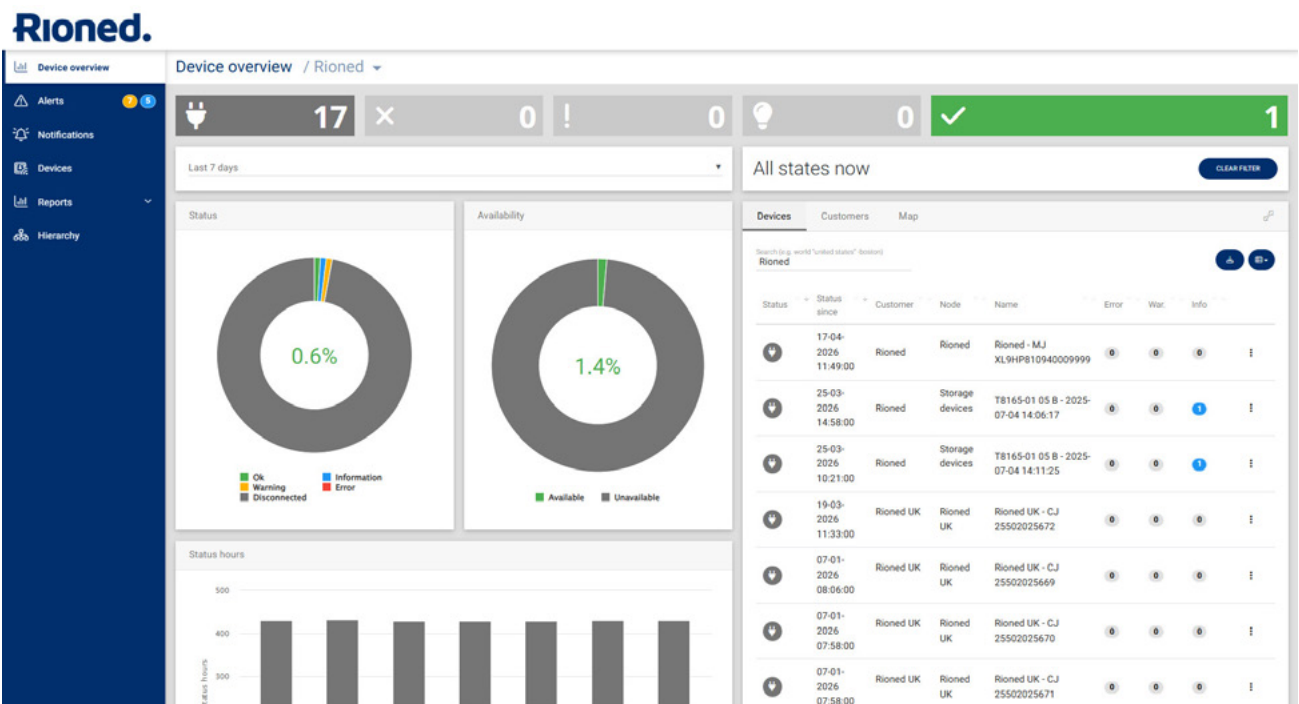
Navigating the Home Dashboard

RioConnect - Home Navigation

1 Open in your browser and navigate to ["rioned.connxt.eu"](https://rioned.connxt.eu)



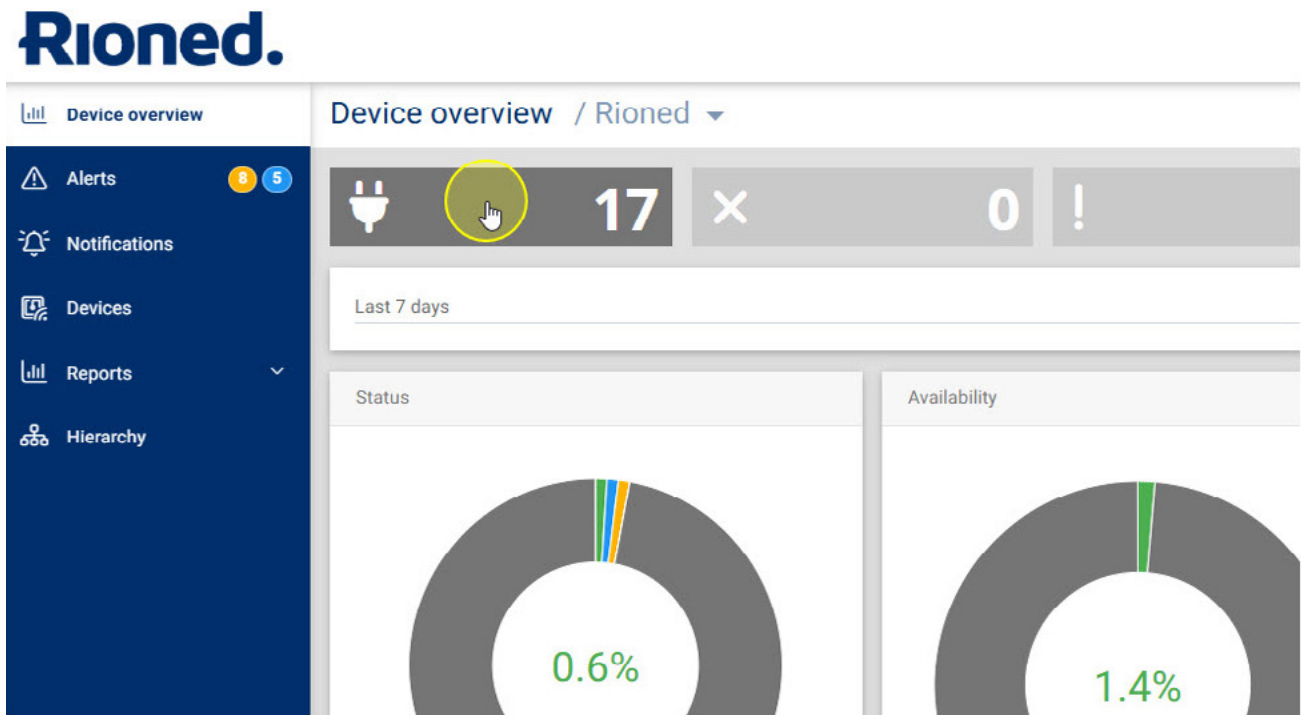
2 Enter your login information Once you are logged in, you will see the home dashboard.



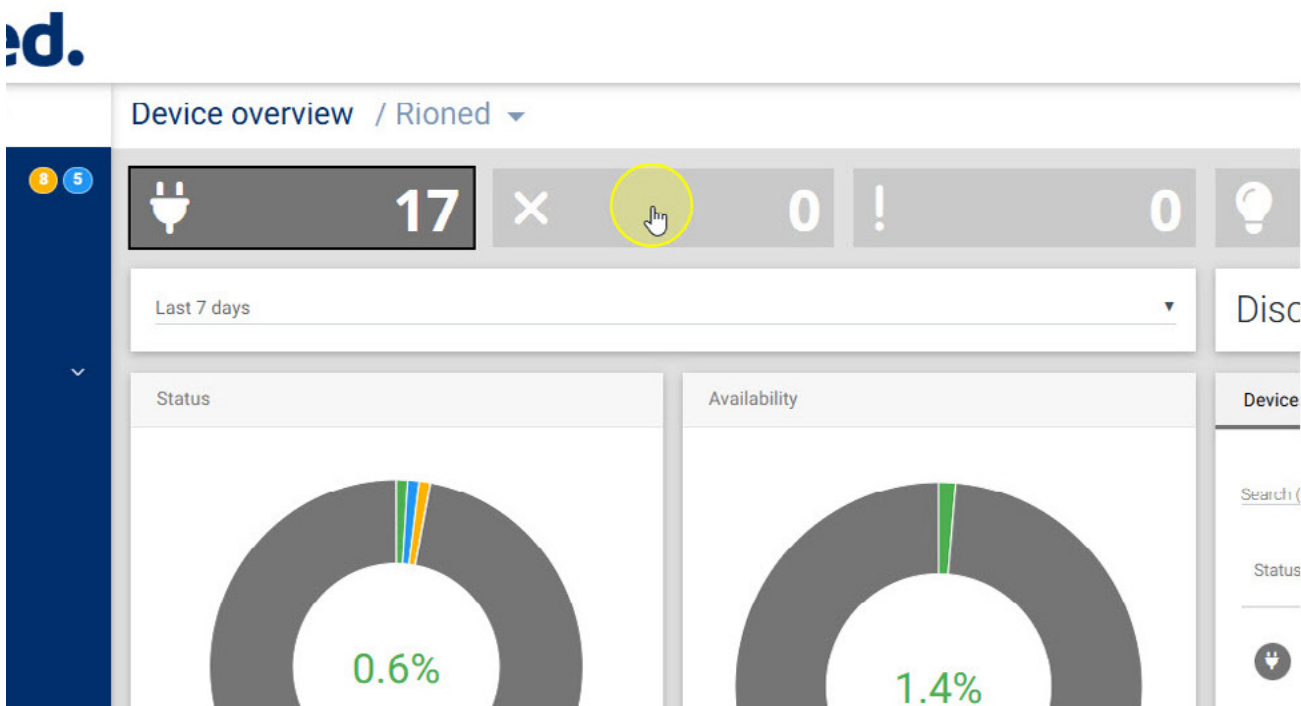
RioConnect - Status Icons

At the top of the page, RioConnect shows summary tiles for your device states.

- 3 Total Connected (Plug Icon):** Located in the top left, this shows the total number of machines currently connected to your fleet.

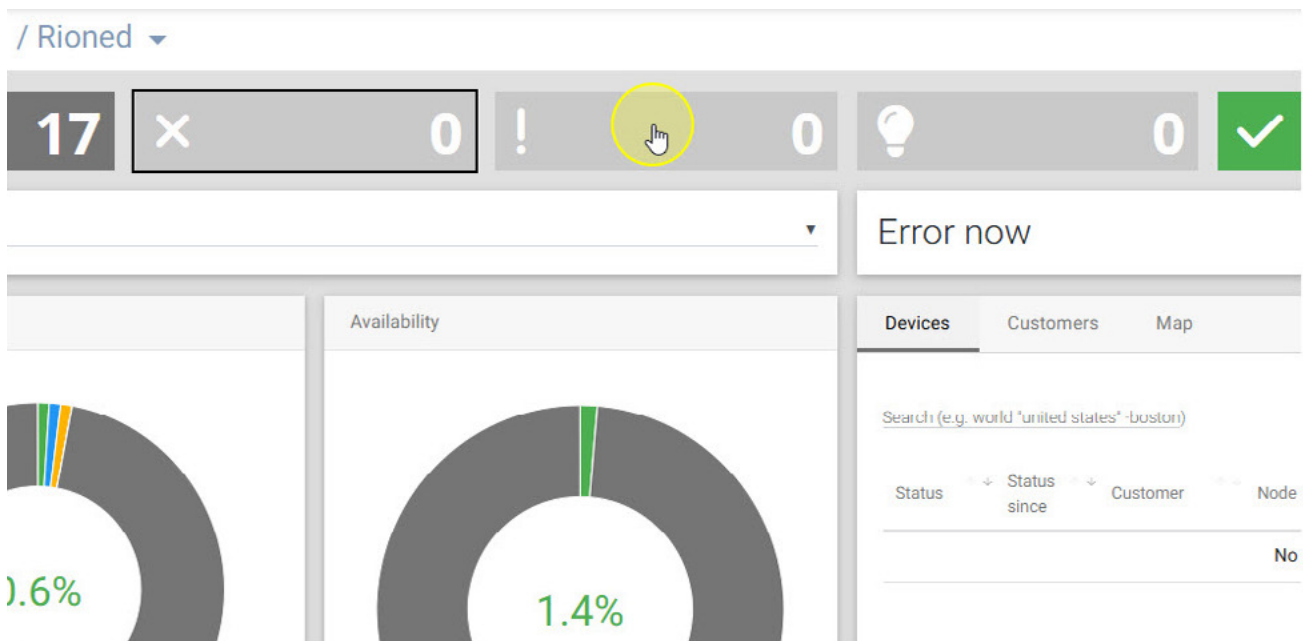


- 4 Error Signal (X Icon):** This icon turns red when there is a critical error or when something is wrong with one of your machines.

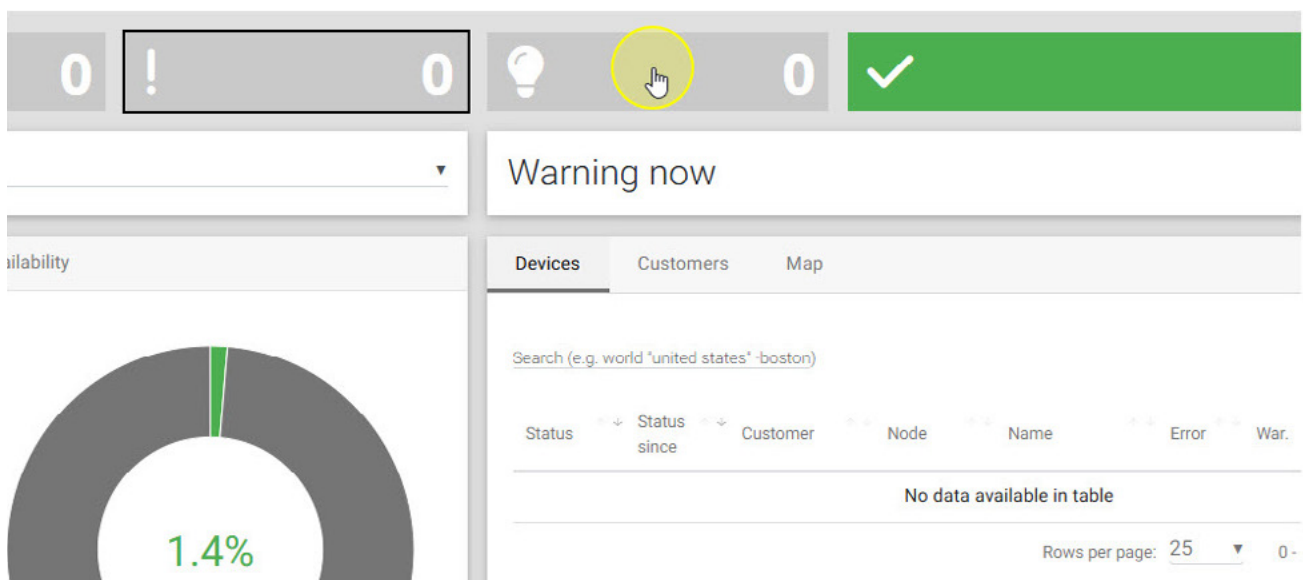


RioConnect - Status Icons

- 5 Warning Signal (! Icon):** This icon turns orange when there is a warning. It indicates something you may need to act upon, but not necessarily right away.

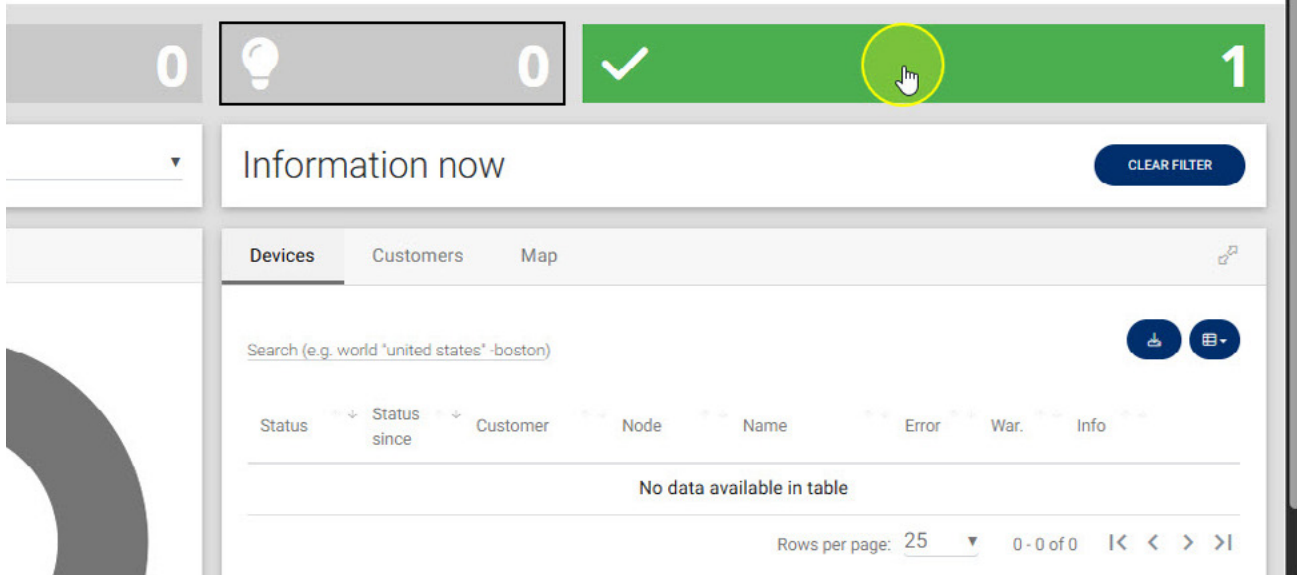


- 6 Information (Lightbulb Icon):** This icon turns blue to display general information that might be useful to know, but does not require immediate action.

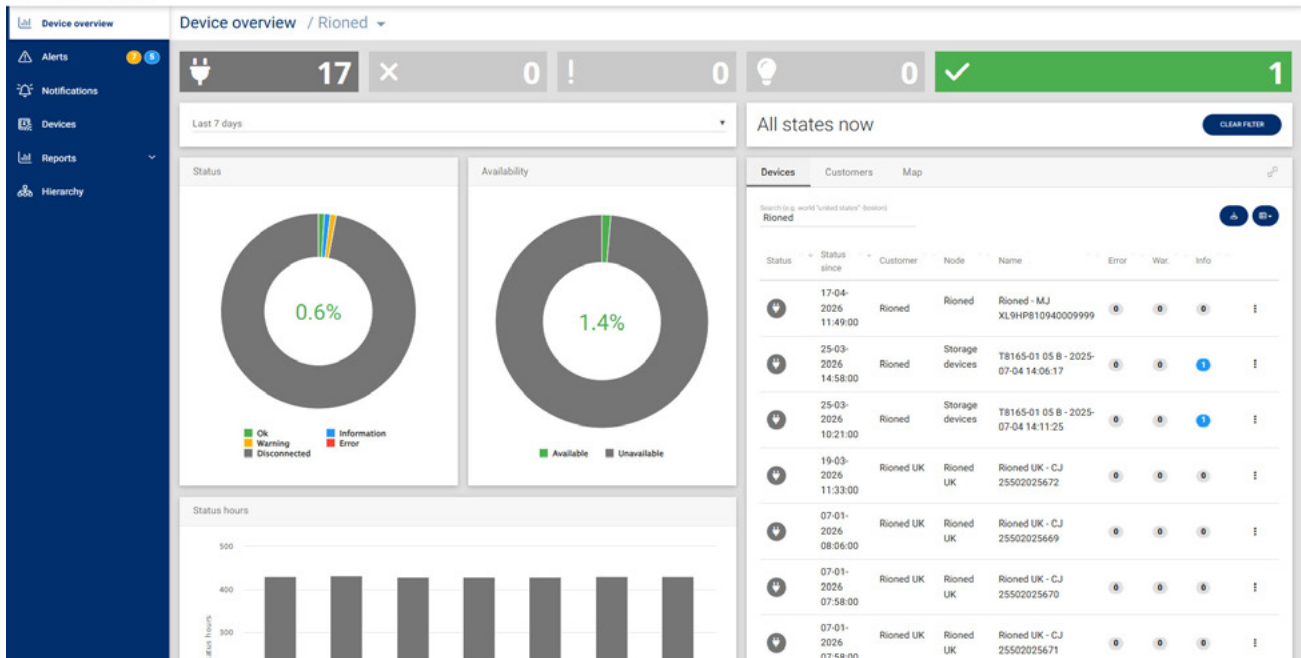


RioConnect - Status Icons

7 Online Machines (Checkmark Icon): This icon turns green when a machine is up and running without any issues.



Rioned.



RioConnect - Machine List

Directly below the visual charts and status bar is a full list of all the individual machines in your fleet.

- 8 To view detailed information, right-click any specific machine in the list, then click either Status or Telemetry from the menu that appears.

The screenshot shows the 'Devices' tab in the RioConnect interface. On the left, a donut chart indicates that 4% of machines are 'Unavailable'. The main table lists machines with columns for Status, Status since, Customer, Node, Name, Error, War., and Info. A yellow circle highlights the 'Rioned' node in the first row, and a mouse cursor is positioned over it.

Status	Status since	Customer	Node	Name	Error	War.	Info
📶	17-04-2026 11:49:00	Rioned	Rioned	Rioned - MJ XL9HP810940009999	0	0	0
📶	25-03-2026 14:58:00	Rioned	Storage devices	T8165-01 05 B - 2025-07-04 14:06:17	0	0	1
📶	25-03-2026 10:21:00	Rioned	Storage devices	T8165-01 05 B - 2025-07-04 14:11:25	0	0	1
📶	19-03-2026 11:33:00	Rioned UK	Rioned UK	Rioned UK - CJ 25502025672	0	0	0

This close-up shows the first row of the machine list. A context menu is open over the 'Rioned' node, with 'Status' and 'Telemetry' options highlighted. The 'Status' option is circled in yellow.

Status	since	CUSTOMER	NODE	NAME	ERROR	WAR.	INFO
📶	17-04-2026 11:49:00	Rioned	Rioned	Rioned - MJ XL9HP810940009999	0	0	0

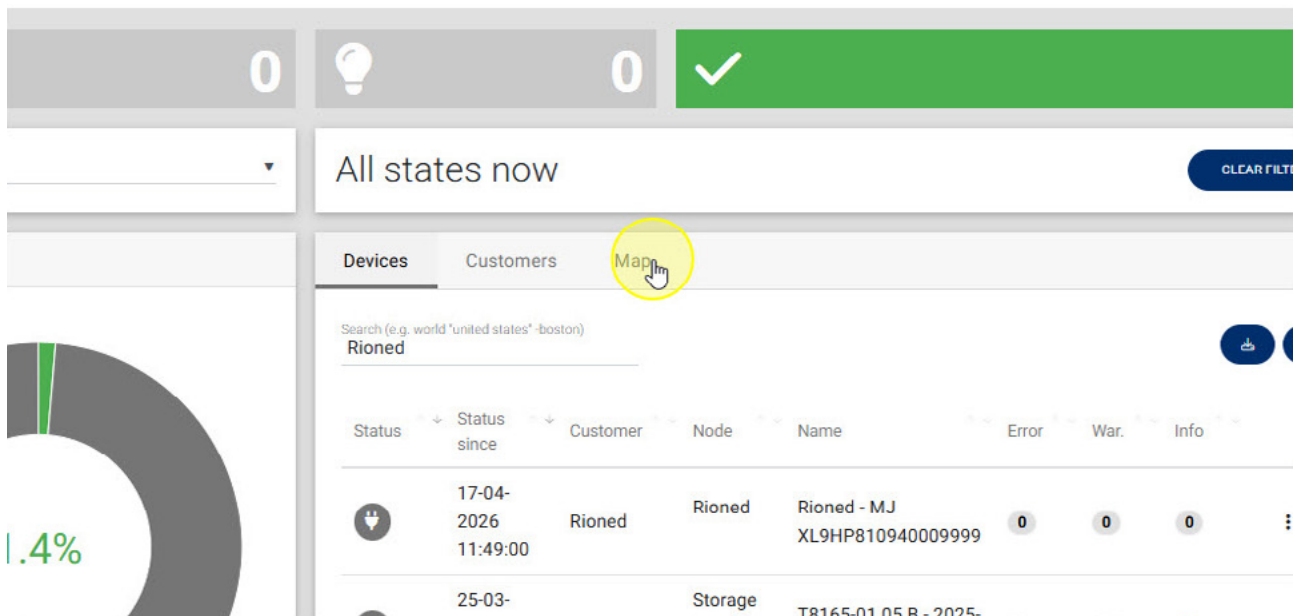
This close-up shows the first row of the machine list. A context menu is open over the 'Rioned' node, with 'Status' and 'Telemetry' options highlighted. The 'Telemetry' option is circled in yellow.

Status	Status since	Customer	Node	Name	Error	War.	Info
📶	17-04-2026 11:49:00	Rioned	Rioned	Rioned - MJ XL9HP810940009999	0	0	0

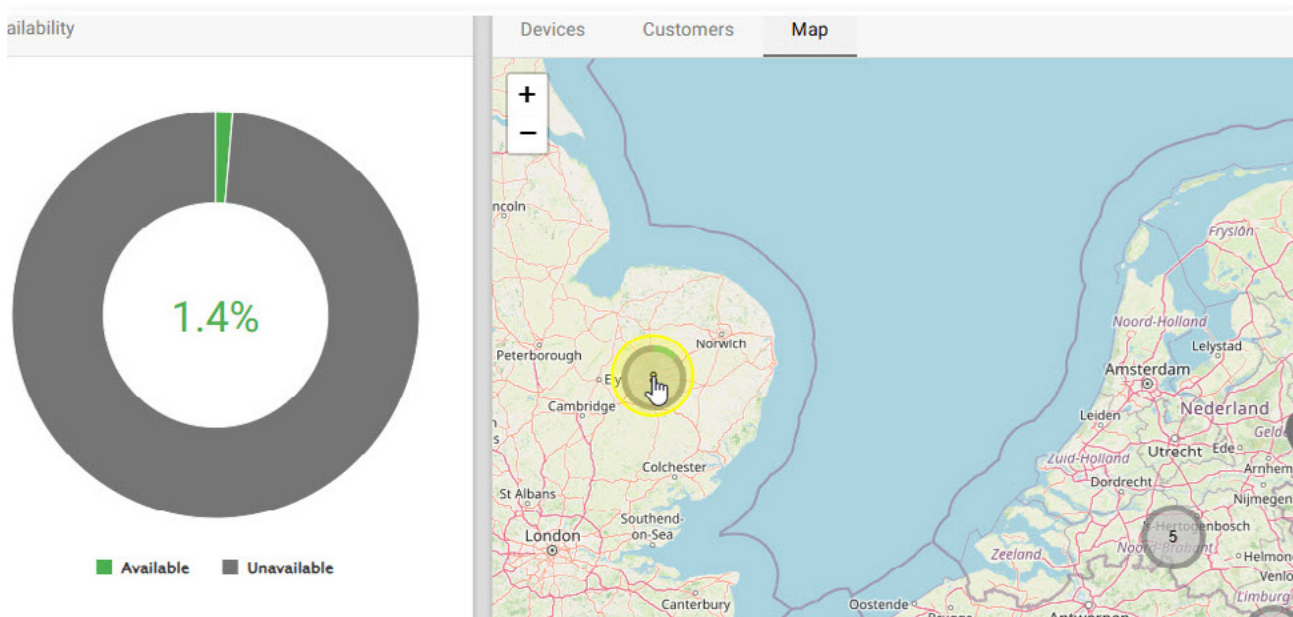
RioConnect - Map View

Located just above the machine list, next to “Devices” and “Customers” is the Map view of all the machines in your fleet.

- 9 Click the Map tab to view a map configuration.

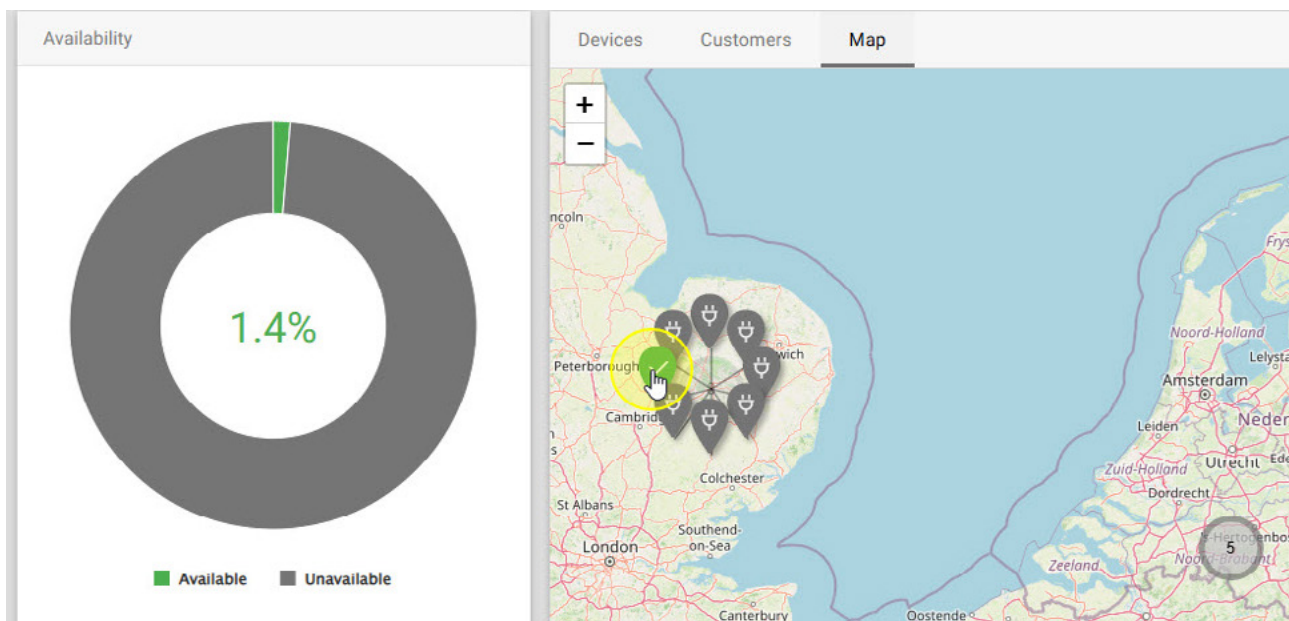


- 10 This view shows the geographical location of your machines.

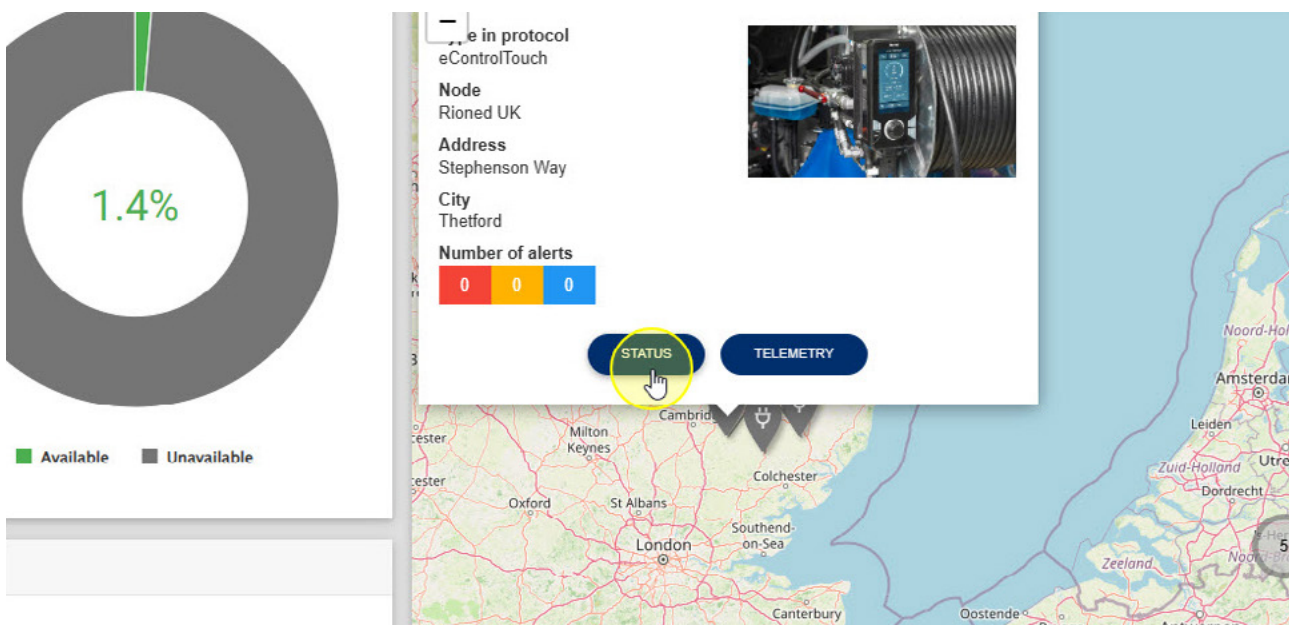


RioConnect - Map View

11 Clicking on the location of your fleet will show all connected machines.



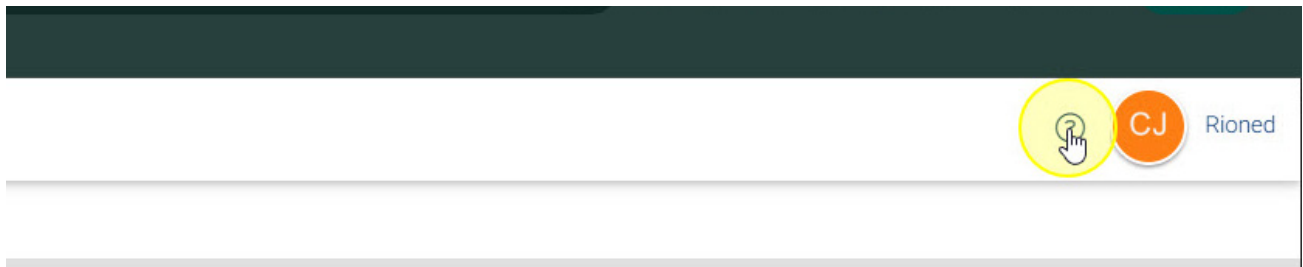
12 Clicking on a machine will also show a preview with options to view the device's status and telemetry.



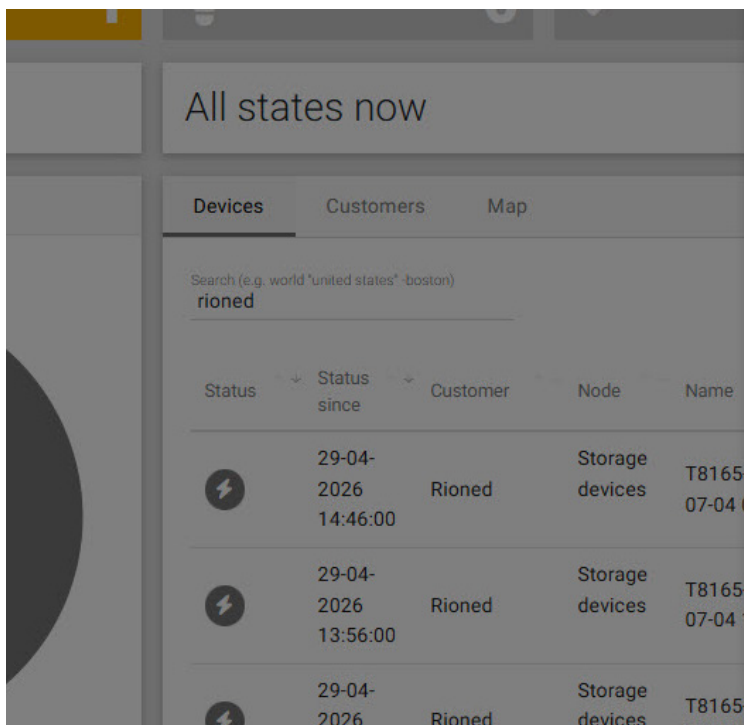
Note: You can only see a machine's location on the map when the machine is actively up and running. If offline then it will show the office location.

RioConnect - Help View

- 13** Click the Question Mark (?) icon located in the top-right corner of the screen.



- 14** RioConnect will automatically display contextual help based on exactly what you are viewing at that moment.



The dashboard is divided into the following parts:

- Status tiles (at the top)
- Filter
- Historic data (blocks at the left)
- Devices (Tab at the right)
- Customers (Tab at the right)
- Map (Tab at the right)

Only devices with monitoring type 'Active' are shown on the dashboard.

Status tiles

The status tiles at the top show the device counts per status.

Historic data

The left side of the dashboard shows the following parts:

- **Status:** The percentages of devices in each status for the selected period.

This is the fastest way to get detailed explanations for specific buttons or data points on your current dashboard.

Rioned.



For more information or help get in contact with our support teams.

Postbus 5070
5004 EB Tilburg

Rioned UK Ltd
FreeFlow House

Centaurusweg 45
5015 TC Tilburg
The Netherlands
+31(0)13 547 91 00
info@rioned.com

Stephenson Way
Thetford, Norfolk, IP24 3RU
United Kingdom
+44 (0)1638 713800
sales@rioned.co.uk

